



McFarland – TriTan, LLC
The “High Pressure” Specialists!

Series 3085 SX

Hydrostatic Test Unit

Pressure to 22,500 PSI | Flow 5-24 GPM | Hydraulic/Diesel/Electric Powered

Hydraulically Powered 3085 SX-DHS-HTS

Power Diesel / Hydraulic diesel engine with a direct mounted compensated hydraulic pump.

Precision Control Regulation and control of the hydraulic fluid 3,000 PSI is easier than regulation and control of the pump discharge fluid at 22,500 PSI. And because a gear reducer is incorporated in the system, a higher RPM Hydraulic motor can be utilized.

Off-The – Shelf Control Valve A standard hydraulic control valve is utilized to control the output pressure by controlling the flow of the lower pressure hydraulic and not the more damaging high pressure test fluid.

Longer Control Parts Life Hydraulic control valve parts are never exposed to more than 3,000 PSI, extending their life beyond parts that are exposed to 22,500 PSI. Any repair/supply company in the world can repair or replace the control valve if needed.

Compact Design Hydraulic power allows for a small footprint.

Power Options Hydraulic powered test systems can be powered by a dedicated engine or, in the case of truck mounted system by, a PTO mounted hydraulic pump off of the truck chassis engine.

Hydraulic Power Options

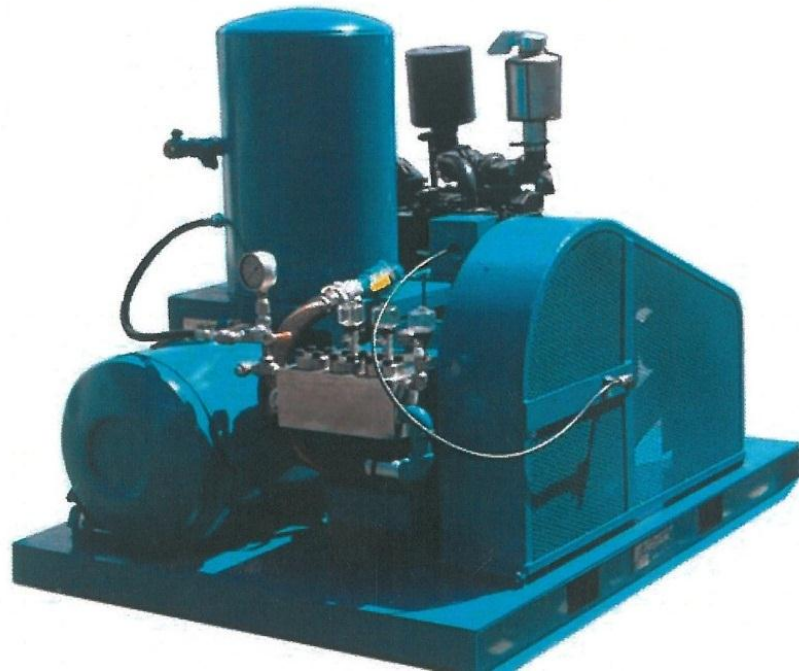
- A. Independent auxiliary deck engine
- B. PTO mounted hydraulic pump for power from the primary truck engine

Diesel Powered 3085 SX- DS – HTS

Power Diesel Engine
Belt Drive or gear reducer power transmission
Infiniti Pressure Control through an Autoclave needle valve control panel.

Electrically Powered 3085 SX- DHS-HTS

Power Electric
Belt Drive or gear reducer power transmission.
Infiniti Pressure Control through an Autoclave needle valve control panel.



Oilfield Testing Applications

- BOP
- Pipe Lines
- Well Casing
- Lubricator
- Choke and Kill Lines
- Christmas Tree

921 Seaco Court, Deer Park, TX 77536, USA

Tel: 1-713-864-3366 / Fax: 1-713-864-3252

Email: sales@tritanpump.com

www.tritanpump.com

Series 3085 SX Hydrostatic Test Unit

FLUID END

- Stainless steel single block for high pressure applications.
- Easily accessible and replaceable packing.
- Bolts on cylinder head and valve covers to prevent galling
- Hardened and polished stainless steel plungers.
- Oil drips plunger lubrication system.
- Chevron "V" style spring loaded packing.
- Furnished with cone seat internal spring non-tapered seat style valves.

POWER END

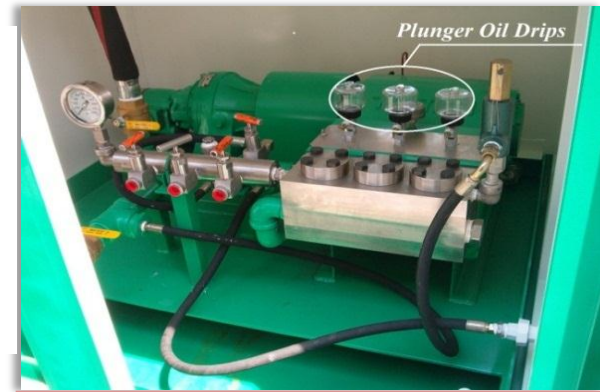
- High strength grey iron alloy casting with heavy wall
- Crankshaft with heavy duty roller bearings.
- H-type connecting rods with replaceable inserts.
- Semi-cylindrical high strength alloy cast crossheads with Hardened ground steel pins.
- Polished stainless steel pony rods.
- Splash-gravity lubrication.

GENERAL

- A single control lever controls the entire test.
One trained operator can run a test in minutes.
- Pressure and flow combinations for all oilfield applications
- Data port for a digital or paper record.
- All TriTan test systems are fully tested at the TriTan factory prior to shipment.
- All TriTan test systems are shipped complete with two (2) maintenance and operation manuals
- Standard protective coating is a two-part high build epoxy for long life.

OPTIONS

- Prefill pumps available for all models.
- Trailers to fit all applications available for all models.
- Poly and stainless steel water and glycol tanks available for all models.
- Paper or digital data recorders.
- Certified offshore skid with fork rails, four point lift.
- Diesel/hydraulic and electric power options.
- Motor starters on electric motor powered systems.
- Enclosed and heated cold weather package.
- Filtration options to meet the filtration requirements of every application.
- Paint and protective coating options are available to meet any specifications.
- 10,000, 15,000 & 20,000 PSI high pressure hose with quick disconnects.
- Powered plunger lubrication oil delivery system.
- Non swivel hose storage reel.



Glycerin filled pressure gauge and three manifold ports for testing and discharge on the left of the complete triplex 3085 SX Pump. The pump features pressure relief valve and lubrication pots on top.



A compact fully enclosed hydrostatic test unit featuring its own tool box, water and fuel supply tanks



McFarland – TriTan, LLC
921 Seaco Court, Deer Park, TX 77536
Tel :1-713-864-3366 | Fax : 1-713-864-3252
Email: sales@tritanpump.com, www.tritanpump.com

921 Seaco Court, Deer Park, TX 77536, USA

Tel: 1-713-864-3366 / Fax: 1-713-864-3252 Email: sales@tritanpump.com

www.tritanpump.com